



GROUND DOUBLING : Line One



Line Two



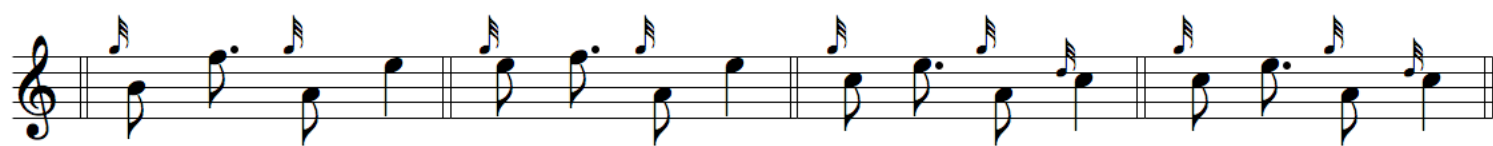
Line Three



FIRST VARIATION (Variation 1): Line One



Line Two



Line Three



TAORLUATH (Variation 2): Line One

The first section, titled "Line One", consists of four staves of music. Each staff begins with a treble clef and a key signature of one flat (B-flat). The music features a complex rhythmic pattern, likely a traditional Irish "taorluath" (a type of "lull" or "lullach"). The notation includes eighth and sixteenth notes, often beamed together in groups, and rests. The pattern repeats across the four staves, with some variations in the final notes of the lines.

Line Two

The second section, titled "Line Two", consists of three staves of music. Each staff begins with a treble clef and a key signature of one flat. The music features a complex rhythmic pattern, likely a traditional Irish "taorluath". The notation includes eighth and sixteenth notes, often beamed together in groups, and rests. The pattern repeats across the three staves, with some variations in the final notes of the lines.

contd



CRUNLUATH (Variation 3): Line One

Musical notation for Line One of CRUNLUATH (Variation 3), consisting of four staves of music in treble clef. The notation includes various note values (eighth and sixteenth notes) and rests, with some sixteenth-note runs.

Line Two

Musical notation for Line Two of CRUNLUATH (Variation 3), consisting of three staves of music in treble clef. The notation includes various note values and rests. The second and third staves feature a simple rhythmic pattern with a 'C' (C-clef) indicated below the staff. The third staff ends with 'cont'd'.

Line Two (cont'd)

Musical notation for Line Two (cont'd) consisting of three staves. Each staff contains four measures of music. The notation includes treble clefs, a common time signature 'C', and various rhythmic values such as eighth notes, quarter notes, and beamed sixteenth notes. The music is written in a single melodic line.

Line Three

Musical notation for Line Three consisting of four staves. Each staff contains four measures of music. The notation includes treble clefs, a common time signature 'C', and various rhythmic values such as eighth notes, quarter notes, and beamed sixteenth notes. The music is written in a single melodic line.

Abbreviations

A musical staff in treble clef showing four measures. The first measure contains a triplet of eighth notes with a '3' above it, followed by the word 'played'. The second measure contains a chord of three eighth notes, followed by the word 'played'. The third measure contains a whole note chord labeled 'C', followed by the word 'played'. The fourth measure contains a sixteenth-note scale.

An empty musical staff with a treble clef.

Typeset by Jay Close, September 2008. Based on Willie Connell's published book, "Ceol-Mor" (1980).