

# LAMENT FOR DONALD OF LAGGAN

## GROUND: Line One

link blend

blend 1 link 2 link

## Line Two

blend

link blend

## Line Three

(link)\*

\* Notes marked (link) might be considered a link note

## TAORLUATH SINGLING (Variation 1): Line One

cadence\*

cadence 1 cadence 2 cadence

## Line Two

cadence

\* The dotted eighth note concluding ALL cadence phrases is a broad link to the next phrase. cont'd

Line Two (cont'd)

cadence

cadence

Musical notation for Line Two (cont'd) in treble clef. It consists of four measures. The first measure has a 'T' under the first note. The second measure has a 'T' under the first note. The third measure has a 'T' under the first note. The fourth measure has a 'T' under the first note. The phrase ends with a cadence.

Line Three

cadence

Musical notation for Line Three in treble clef. It consists of four measures. The first measure has a 'T' under the first note. The second measure has a 'T' under the first note. The third measure has a 'T' under the first note. The fourth measure has a 'T' under the first note. The phrase ends with a cadence.

TAORLUATH DOUBLING (Variation 2): Line One

Musical notation for TAORLUATH DOUBLING (Variation 2): Line One in treble clef. It consists of four measures. The first measure has a 'T' under the first note. The second measure has a 'T' under the first note. The third measure has a 'T' under the first note. The fourth measure has a 'T' under the first note.

Musical notation for TAORLUATH DOUBLING (Variation 2): Line One (continued) in treble clef. It consists of four measures. The first measure has a 'T' under the first note. The second measure has a 'T' under the first note. The third measure has a 'T' under the first note. The fourth measure has a 'T' under the first note.

Line Two

Musical notation for Line Two in treble clef. It consists of four measures. The first measure has a 'T' under the first note. The second measure has a 'T' under the first note. The third measure has a 'T' under the first note. The fourth measure has a 'T' under the first note.

Musical notation for Line Two (continued) in treble clef. It consists of four measures. The first measure has a 'T' under the first note. The second measure has a 'T' under the first note. The third measure has a 'T' under the first note. The fourth measure has a 'T' under the first note.

Line Three

Musical notation for Line Three in treble clef. It consists of four measures. The first measure has a 'T' under the first note. The second measure has a 'T' under the first note. The third measure has a 'T' under the first note. The fourth measure has a 'T' under the first note.

CRUNLUATH SINGLING (Variation 3): Line One

cadence\*

Musical notation for CRUNLUATH SINGLING (Variation 3): Line One in treble clef. It consists of four measures. The first measure has a 'T' under the first note. The second measure has a 'T' under the first note. The third measure has a 'T' under the first note. The fourth measure has a 'T' under the first note. The phrase ends with a cadence.

\*The dotted eighth note concluding ALL cadence phrases is a broad link to the next phrase. cont'd

Line One (cont'd)

cadence

1 cadence

2 cadence

Musical notation for Line One (cont'd) in treble clef. It features a sequence of eighth notes and quarter notes, with two distinct cadence points marked by double bar lines and repeat signs. The first cadence is followed by a first ending bracket, and the second is followed by a second ending bracket.

Line Two

cadence

Musical notation for Line Two in treble clef. It begins with a double bar line and repeat sign, followed by eighth and quarter notes. A 'C' time signature is placed below the staff. The line concludes with a cadence marked by a double bar line and repeat sign.

cadence

cadence

Musical notation for the continuation of Line Two in treble clef. It consists of two measures of eighth and quarter notes, each with a 'C' time signature below the staff. The line ends with a cadence marked by a double bar line and repeat sign.

Line Three

cadence

Musical notation for Line Three in treble clef. It starts with a double bar line and repeat sign, followed by eighth and quarter notes. A 'C' time signature is placed below the staff. The line concludes with a cadence marked by a double bar line and repeat sign.

CRUNLUATH DOUBLING (Variation 4): Line One

Musical notation for the first line of CRUNLUATH DOUBLING (Variation 4) in treble clef. It begins with a double bar line and repeat sign, followed by eighth and quarter notes. A 'C' time signature is placed below the staff. The line concludes with a cadence marked by a double bar line and repeat sign.

Musical notation for the continuation of the first line of CRUNLUATH DOUBLING (Variation 4) in treble clef. It consists of four measures of eighth and quarter notes, each with a 'C' time signature below the staff. The line ends with a cadence marked by a double bar line and repeat sign.

Line Two

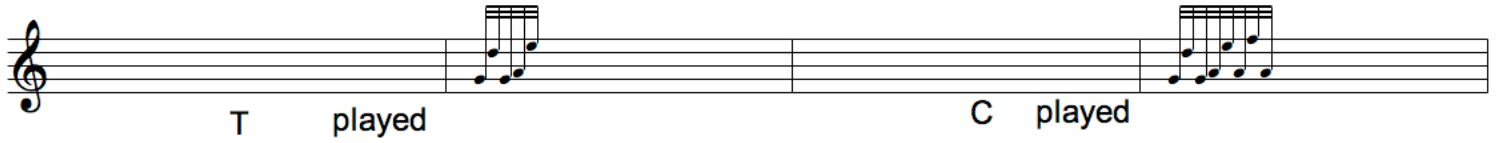
Musical notation for the second line of CRUNLUATH DOUBLING (Variation 4) in treble clef. It begins with a double bar line and repeat sign, followed by eighth and quarter notes. A 'C' time signature is placed below the staff. The line concludes with a cadence marked by a double bar line and repeat sign.

Musical notation for the continuation of the second line of CRUNLUATH DOUBLING (Variation 4) in treble clef. It consists of four measures of eighth and quarter notes, each with a 'C' time signature below the staff. The line ends with a cadence marked by a double bar line and repeat sign.

Line Three



Abbreviations



Typeset by Jay Close, August 2008. Based on Willie Connell's published book, "Ceol-Mor" (1980).