

# GRAIN IN HIDES AND CORN IN SACKS

## GROUND: Line One



## Line Two



## Line Three



cont 'd

Line Three (cont'd)

phrases tied together

Musical notation for Line Three (cont'd) on a single staff. It features a treble clef and a series of eighth notes with stems pointing up. A slur is placed over the first four measures, with the text "phrases tied together" centered below it. The notation continues with eighth notes and rests across the remaining measures.

VARIATION 1: Line One

Musical notation for Variation 1: Line One, first staff. It features a treble clef and a series of eighth notes with stems pointing up. The notation is divided into four measures by bar lines.

Musical notation for Variation 1: Line One, second staff. It features a treble clef and a series of eighth notes with stems pointing up. The notation is divided into four measures by bar lines.

Musical notation for Variation 1: Line One, third staff. It features a treble clef and a series of eighth notes with stems pointing up. The notation is divided into four measures by bar lines.

Line Two

Musical notation for Line Two, first staff. It features a treble clef and a series of eighth notes with stems pointing up. The notation is divided into four measures by bar lines.

Musical notation for Line Two, second staff. It features a treble clef and a series of eighth notes with stems pointing up. The notation is divided into four measures by bar lines.

Musical notation for Line Two, third staff. It features a treble clef and a series of eighth notes with stems pointing up. The notation is divided into four measures by bar lines.

Line Three

In Variation 1 there is a slight lean on the second note of each couplet (low A or low G).

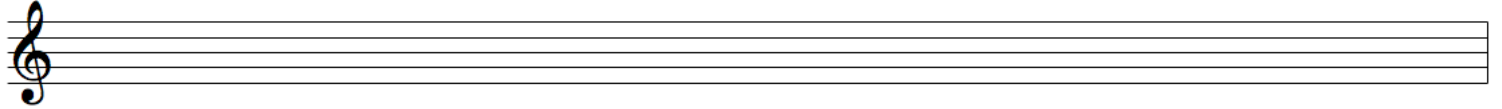
TAORLUATH SINGLING (Variation 2): Line One

Line Two

Line Three



The above approximates the timing of Willie's instructional tape: even timed couplets (two quarter notes). Other instruction from Willie suggests a "long-short" timing of the couplets consistent with his printed text.



TAORLUATH DOUBLING (Variation 3): Line One



Line Two



Line Three



CRUNLUATH SINGLING (Variation 4): Line one



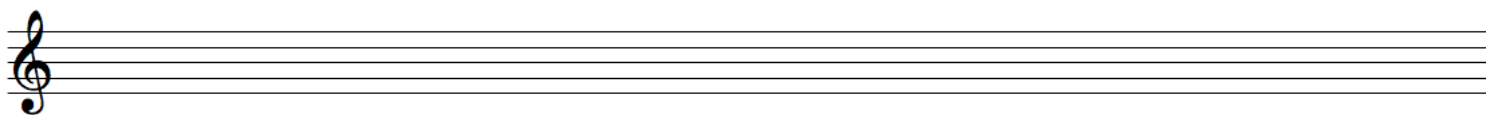
Line Two



Line Three



The couplets above should be timed to match those of the taorluath singling.



CRUNLUATH DOUBLING (Variation 5): Line One



Line One (cont'd)

Musical notation for Line One (cont'd) on a single treble clef staff. The notation consists of four measures. The first measure contains a quarter note G4, a sixteenth note A4, and a sixteenth note B4. The second measure contains a sixteenth note C5, a sixteenth note D5, a sixteenth note E5, a sixteenth note F5, a sixteenth note G5, a sixteenth note A5, a sixteenth note B5, and a sixteenth note C6. The third measure contains a quarter note G4, a quarter note F4, and a quarter note E4. The fourth measure contains a quarter note D4, a quarter note C4, and a quarter note B3. The letter 'C' is written below the staff in the second and fourth measures.

Line Two

Musical notation for Line Two on a single treble clef staff. The notation consists of four measures. The first measure contains a quarter note G4, a sixteenth note A4, and a sixteenth note B4. The second measure contains a sixteenth note C5, a sixteenth note D5, a sixteenth note E5, a sixteenth note F5, a sixteenth note G5, a sixteenth note A5, a sixteenth note B5, and a sixteenth note C6. The third measure contains a quarter note G4, a quarter note F4, and a quarter note E4. The fourth measure contains a quarter note D4, a quarter note C4, and a quarter note B3. The letter 'C' is written below the staff in the second and fourth measures.

Musical notation for Line Two (continued) on a single treble clef staff. The notation consists of four measures. The first measure contains a quarter note G4, a sixteenth note A4, and a sixteenth note B4. The second measure contains a sixteenth note C5, a sixteenth note D5, a sixteenth note E5, a sixteenth note F5, a sixteenth note G5, a sixteenth note A5, a sixteenth note B5, and a sixteenth note C6. The third measure contains a quarter note G4, a quarter note F4, and a quarter note E4. The fourth measure contains a quarter note D4, a quarter note C4, and a quarter note B3. The letter 'C' is written below the staff in the second and fourth measures.

Line Three

Musical notation for Line Three on a single treble clef staff. The notation consists of four measures. The first measure contains a quarter note G4, a sixteenth note A4, and a sixteenth note B4. The second measure contains a sixteenth note C5, a sixteenth note D5, a sixteenth note E5, a sixteenth note F5, a sixteenth note G5, a sixteenth note A5, a sixteenth note B5, and a sixteenth note C6. The third measure contains a quarter note G4, a quarter note F4, and a quarter note E4. The fourth measure contains a quarter note D4, a quarter note C4, and a quarter note B3. The letter 'C' is written below the staff in the second, third, and fourth measures.

Abbreviations

Abbreviations diagram on a single treble clef staff. The staff is divided into two sections. The first section is labeled 'T played' and contains a sixteenth note G4, a sixteenth note A4, and a sixteenth note B4. The second section is labeled 'C played' and contains a sixteenth note C5, a sixteenth note D5, a sixteenth note E5, a sixteenth note F5, a sixteenth note G5, a sixteenth note A5, a sixteenth note B5, and a sixteenth note C6.

An empty musical staff with a treble clef.

Typeset by Jay Close, September 2008. Based on Willie Connell's published book, "Ceol - Mor" (1980).