

CORRIENESSAN'S SALUTE

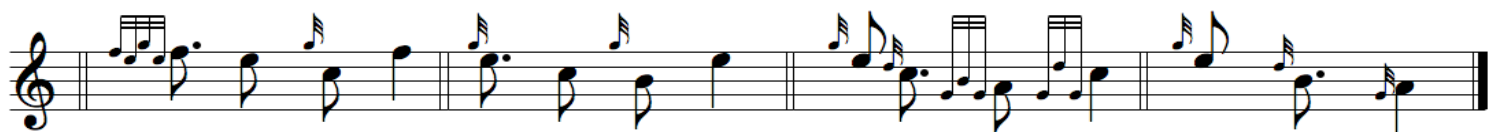
GROUND: Line One



Line Two



Line Three



FIRST VARIATION (Variation 1): Line One



cont'd

Line One (cont'd)

cadence



Line Two

cadence



cadence



cadence



Line Three

cadence



cadence



FIRST VARIATION DOUBLING (Variation 2): Line One



Line Two

Three staves of musical notation in treble clef. The first staff begins with a repeat sign. The music consists of eighth and sixteenth notes, with some notes beamed together. The second and third staves continue the melody with similar rhythmic patterns.

Line Three

Two staves of musical notation in treble clef. The first staff begins with a repeat sign. The music continues with eighth and sixteenth notes, maintaining the melodic and rhythmic style of the previous lines.

TAORLUATH SINGLING (Variation 3): Line One

cadence

First staff of musical notation for TAORLUATH SINGLING (Variation 3). It features a repeat sign and includes a complex rhythmic pattern with many sixteenth notes. The staff ends with a double bar line.

cadence

Second staff of musical notation for TAORLUATH SINGLING (Variation 3). It continues the complex rhythmic pattern from the first staff, ending with a double bar line.

Line Two

cadence

Third staff of musical notation for TAORLUATH SINGLING (Variation 3). It begins with a repeat sign and includes a 'T' marking under the first note of each measure. The staff ends with a double bar line.

cont'd

Line Two (cont'd)

cadence

cadence

Line Three

cadence

cadence

TAORLUATH DOUBLING (Variation 4): Line One

Line Two

cont'd

Line Two (cont'd)

Musical notation for Line Two (cont'd) in treble clef. It consists of four measures. The first three measures each begin with a triplet of eighth notes, indicated by a 'T' below the staff. The notes are G4, A4, and B4. The fourth measure contains a more complex rhythmic pattern with eighth and sixteenth notes.

Line Three

Musical notation for Line Three in treble clef. It consists of four measures, each beginning with a triplet of eighth notes (G4, A4, B4) marked with a 'T' below the staff.

Musical notation for Line Three (cont'd) in treble clef. It consists of four measures, each beginning with a triplet of eighth notes (G4, A4, B4) marked with a 'T' below the staff.

CRUNLUATH SINGLING (Variation 5): Line One

cadence

Musical notation for CRUNLUATH SINGLING (Variation 5): Line One in treble clef. It consists of four measures. The first three measures feature a complex sixteenth-note pattern. The fourth measure ends with a cadence.

cadence

Musical notation for CRUNLUATH SINGLING (Variation 5): Line One (cont'd) in treble clef. It consists of four measures, continuing the complex sixteenth-note pattern from the previous line, ending with a cadence.

Line Two

cadence

Musical notation for Line Two in treble clef. It consists of four measures. The first three measures each begin with a triplet of eighth notes, indicated by a 'C' below the staff.

cadence

Musical notation for Line Two (cont'd) in treble clef. It consists of four measures, continuing the triplet pattern from the previous line.

cadence

Musical notation for Line Two (cont'd) in treble clef. It consists of four measures, continuing the triplet pattern from the previous line.

Line Three

cadence

cadence

CRUNLUATH DOUBLING (Variation 6): Line One

Line Two

Line Three

cont'd

Line Three (cont'd)

Musical notation for Line Three (cont'd) on a single treble clef staff. The notation consists of four measures, each starting with a C-clef (soprano clef) and containing a sequence of eighth notes. The notes in each measure are: G4, A4, B4, C5, B4, A4, G4. The piece ends with a double bar line.

Abbreviations

Musical notation for Abbreviations on a single treble clef staff. The first measure is labeled 'T played' and contains a whole rest. The second measure contains a sixteenth-note triplet of G4, A4, and B4. The third measure is labeled 'C played' and contains a whole rest. The fourth measure contains another sixteenth-note triplet of G4, A4, and B4.

An empty musical staff with a treble clef, consisting of five horizontal lines.

Typeset by Jay Close, September 2008. Based on Willie Connell's published book, "Ceol-Mor" (1980).